

STARTING GUIDE

WINDOWS 11

By choosing an OPEQ refurbished computer, you are actively participating in our mission to contribute to a green and connected future.

Over the past 25 years, OPEQ has given a second life to more than 250,000 computers and provided more than 70,000 hours of paid internships each year to young people from all regions of Quebec.

We enjoyed preparing this computer especially for you, and we thank you for supporting our commitment to sustainable and socially responsible computing.

The OPEQ team

1. PRELIMINARY STAGE

Before turning on your computer for the first time, please make sure that:

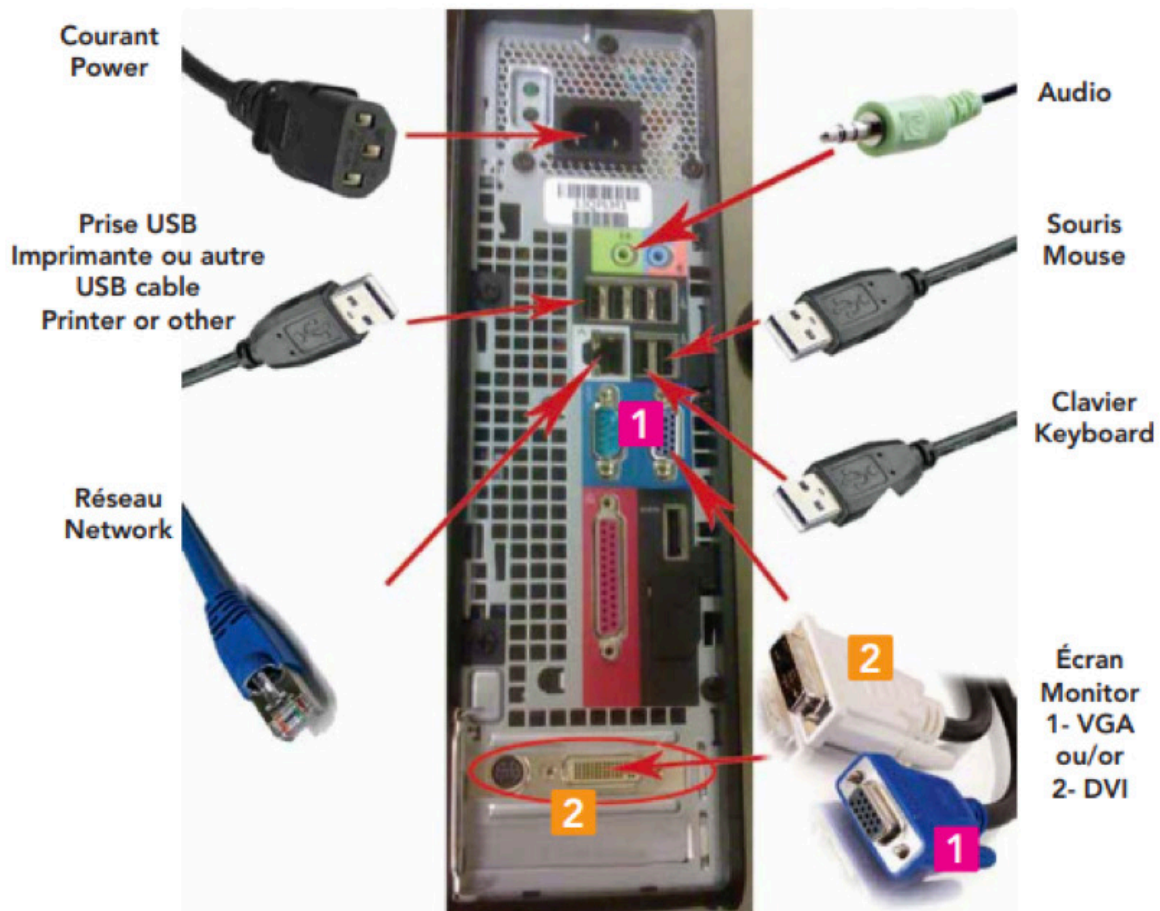
- No damage is visible on the device,
- All wires are connected in the correct positions (see Connection Guide on next page),
- No speakers, microphones or headphones are connected.

Now you can start your computer!

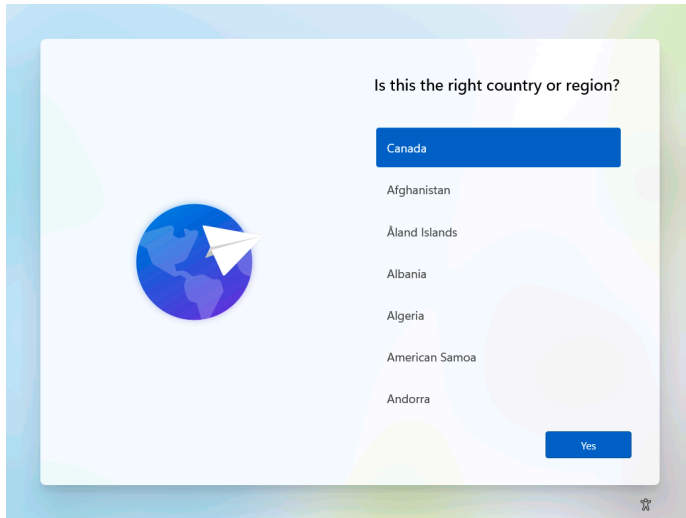
2. CONNECTION

Voici une représentation du panneau arrière d'un ordinateur pour faire les branchements.
Veuillez noter que la position des prises sur votre panneau peut être différente.
Le câble audio et le câble réseau ne sont pas inclus.

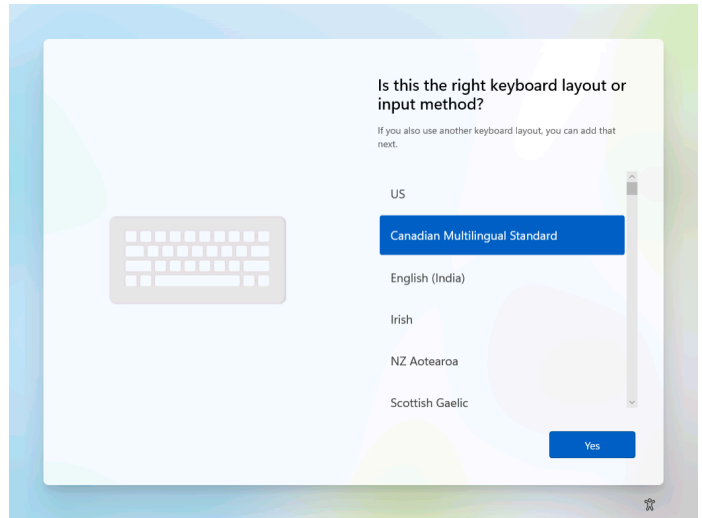
Here is an illustration of a computer back panel to make the connections.
Please note that the position of the connections on your panel may be different.
The audio cable and the network cable are not included.



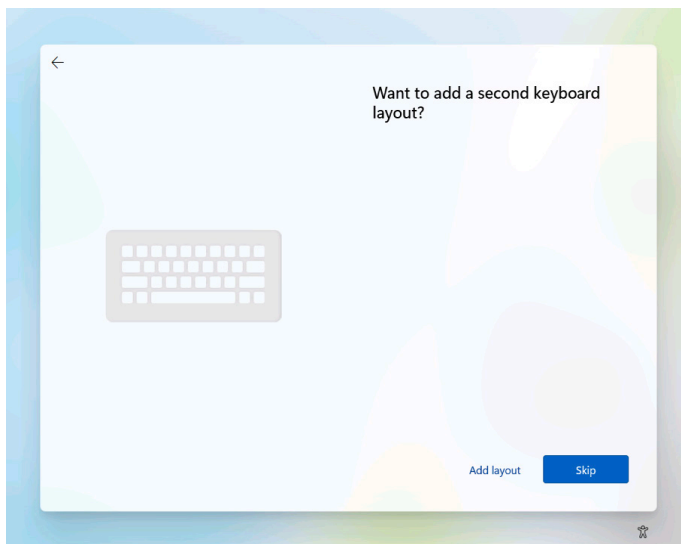
3. STARTING GUIDE



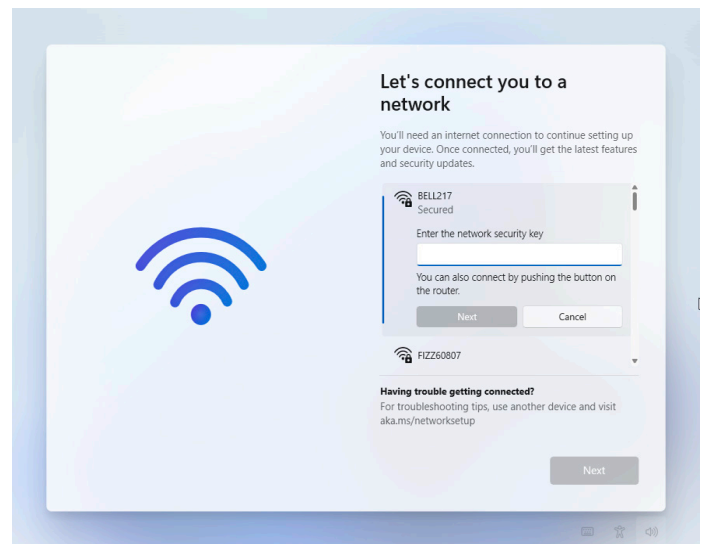
1. Select the "Canada" region.
2. Click on "Yes."



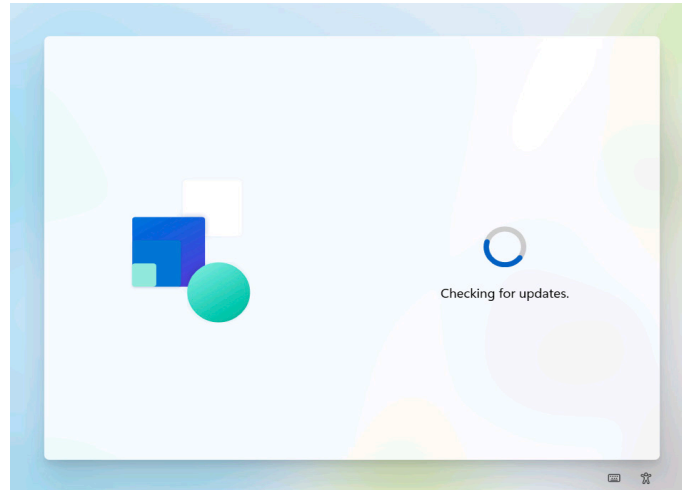
3. Choose the keyboard layout "Canadian Multilingual Standard."
4. Click on "Yes."



5. Click on "Skip"

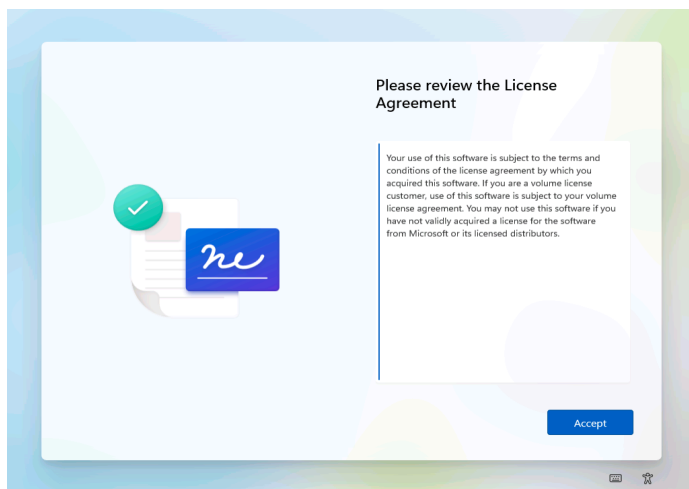


If your computer has a wireless card, make sure you have screwed the antennas according to the Connection Guide, then follow the steps below. Otherwise, skip to step 10.

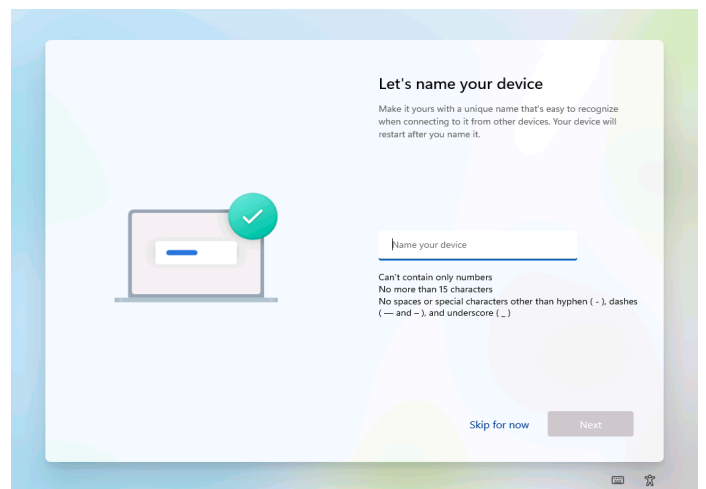


6. Check the name of your network before making your choice and have the password ready (often given by your Internet provider or written on your router).
7. Select your network's name.
8. Enter your password in the text field.
9. Click on "Next."
10. The computer automatically checks for updates. Expect them to be completed. This may take several minutes.

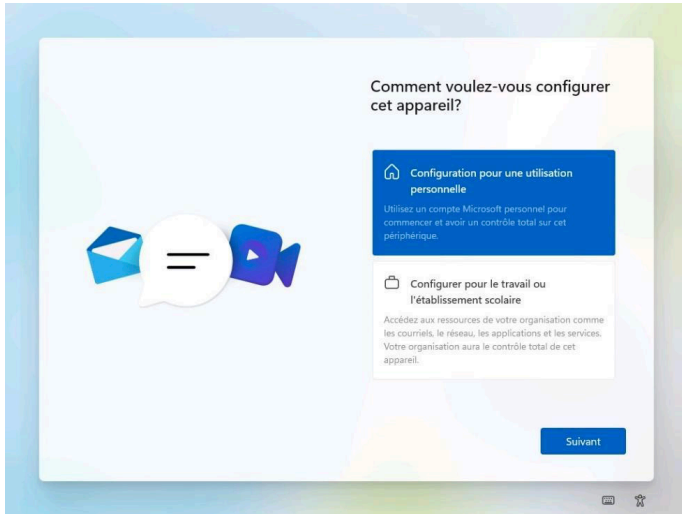
IMPORTANT: Do not interrupt the search.



11. Read the Microsoft license agreement.
12. Click on "Accept" to continue.

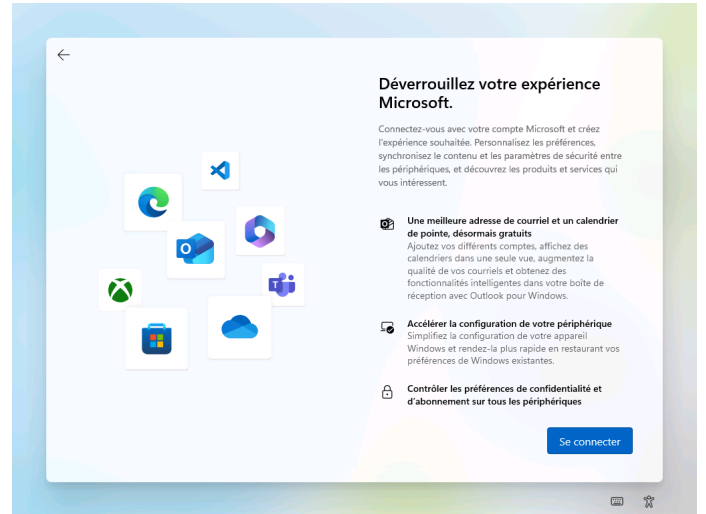


13. At this step, you can choose to enter a name for your device (Ex. « PC_Carl»). Otherwise, click on « skip for now » and continue to step 15.
14. Click on "Next."

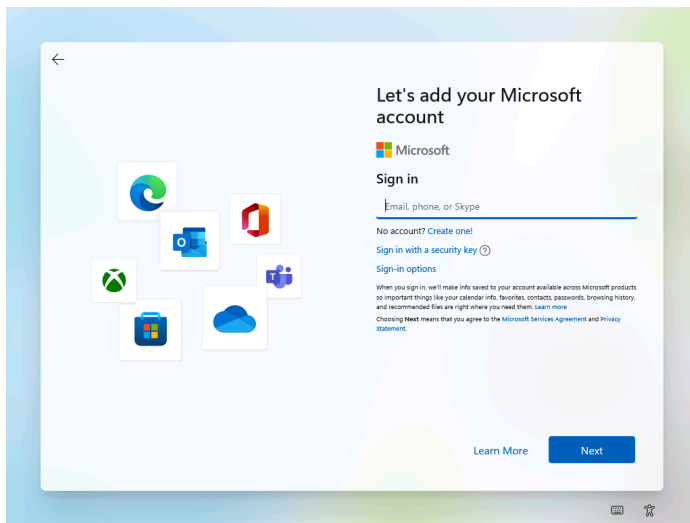


15. To create an account for your computer, choose "Set up for personal use".

16. Click on "Next."



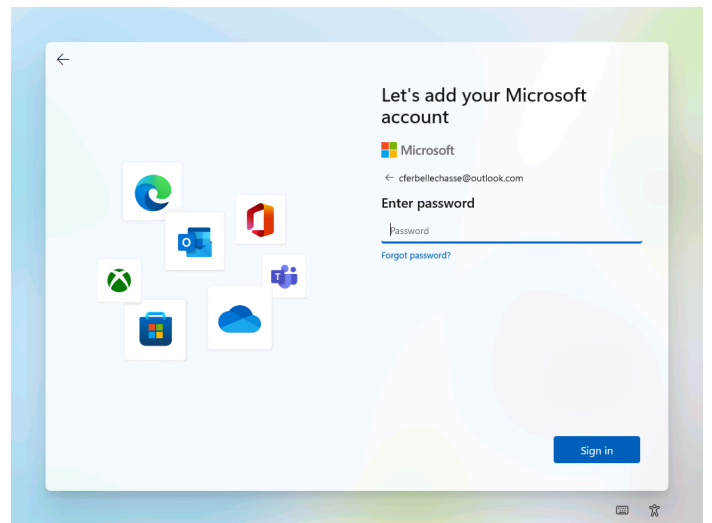
17. At this point, click on "Sign in".



18. Enter your Microsoft email address.

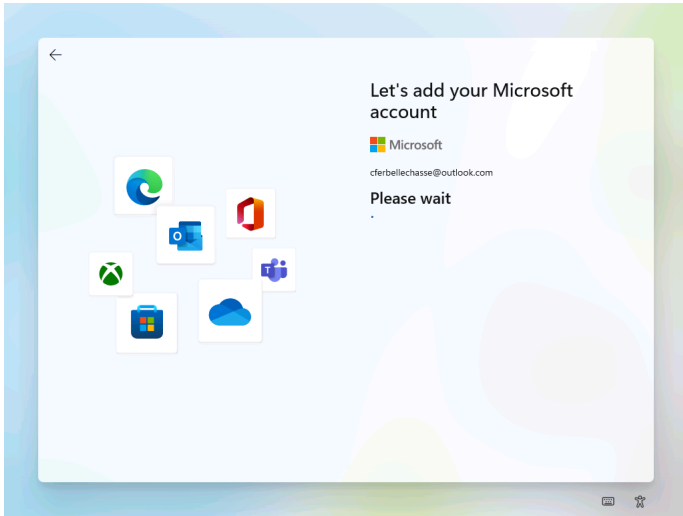
19. Click on "Next".

If you don't have a Microsoft email address, you can easily create one by simply clicking "Create one!" and following the steps.

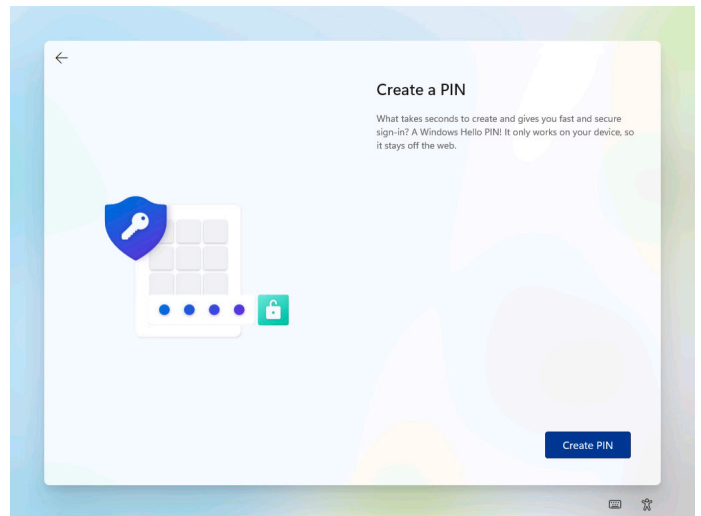


20. Please enter your password that is linked to the Microsoft account you entered earlier.

21. Click on "Sign in".

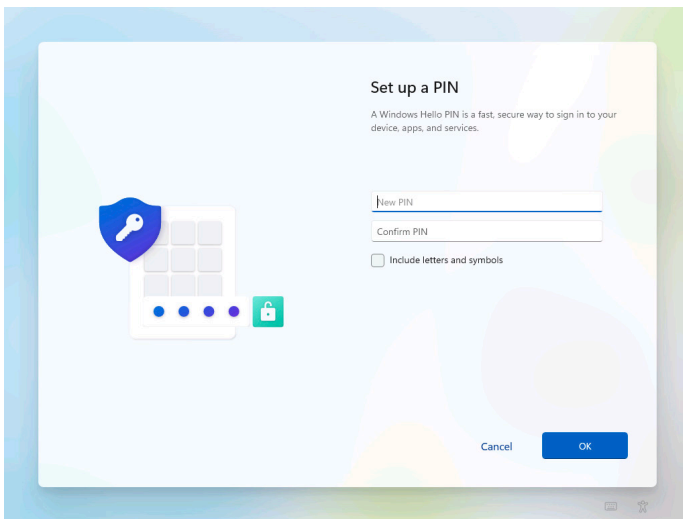


22. Wait a moment, so that Microsoft can validate the information you previously entered about your account.



23. Next, Microsoft will ask you to create a « PIN » code, in order to improve the security of your account.

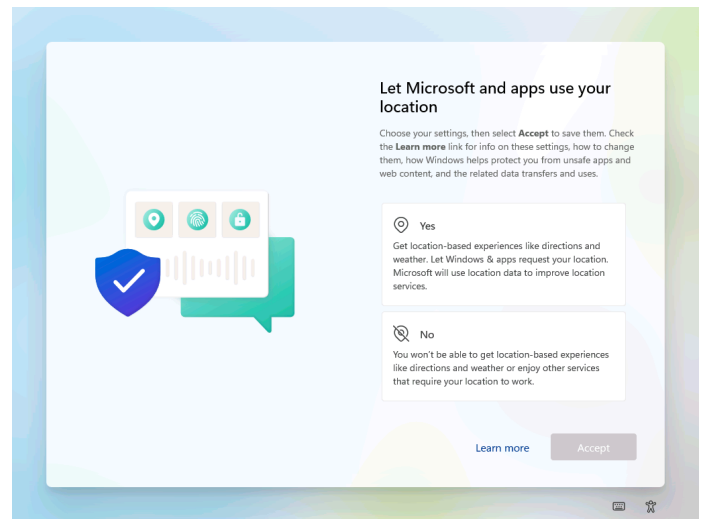
24. Click on "Create PIN ".



25. Enter the PIN you wish to use to log into your account from your computer.

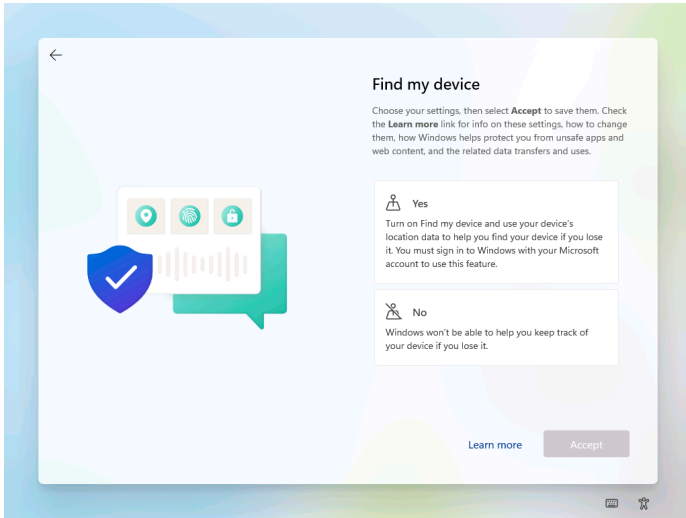
26. Enter your PIN code a second time, in order to validate it.

27. Click on "OK ".

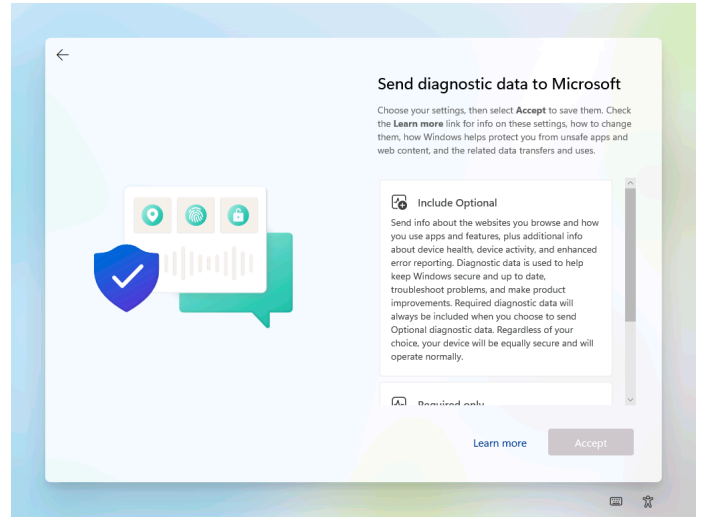


28. Select an option.

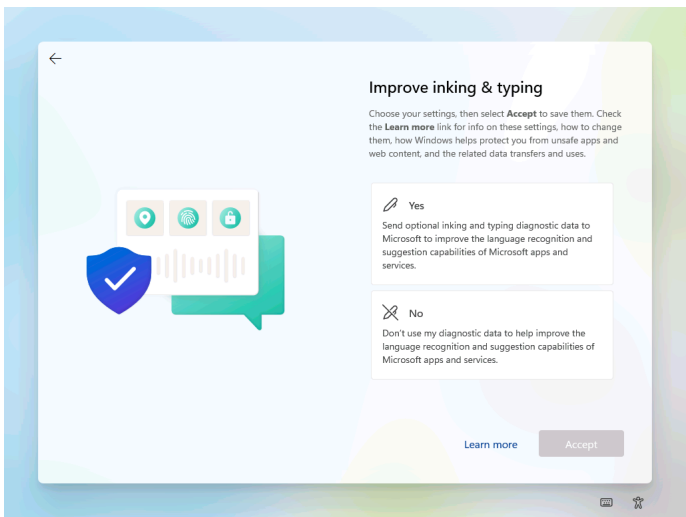
29. Click on "Accept ".



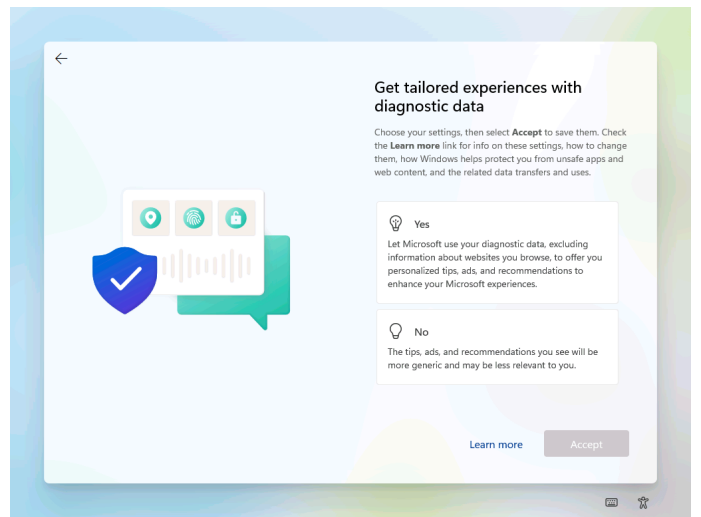
30. Choose an option.
31. Click on "Accept."



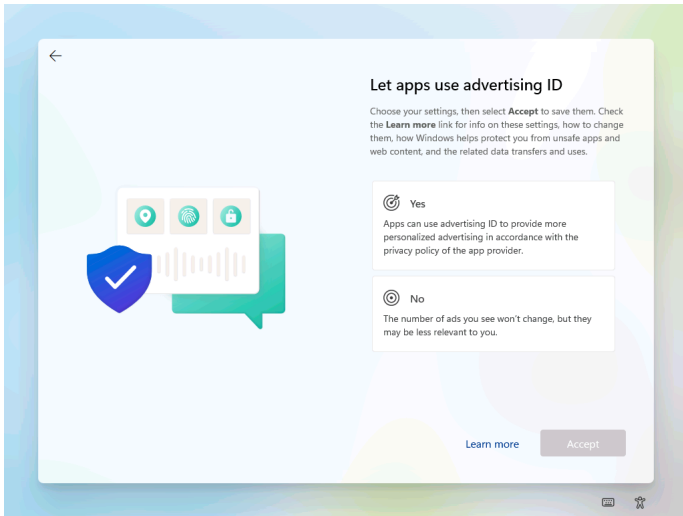
32. Choose an option.
33. Click on "Accept."



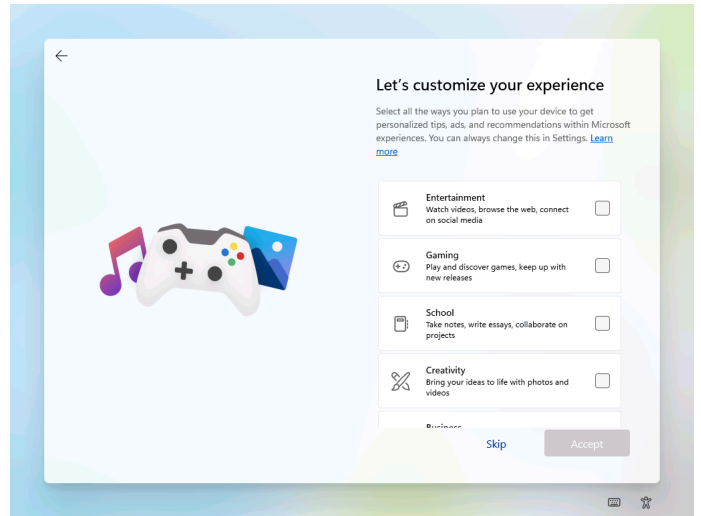
34. Choose an option.
35. Click on "Accept."



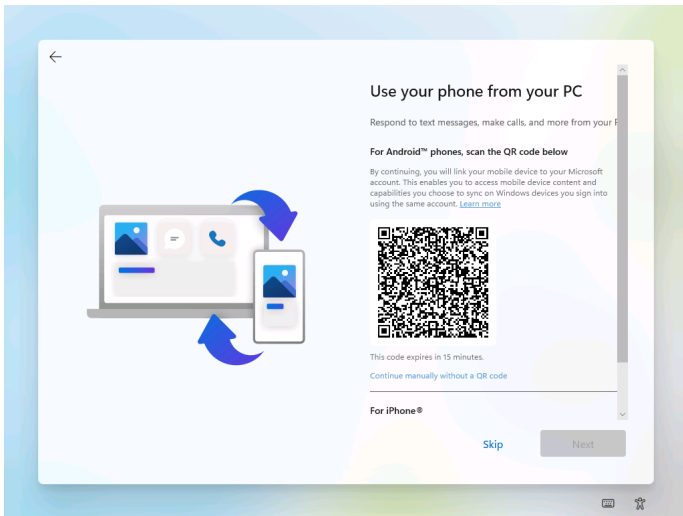
36. Choose an option.
37. Click on "Accept."



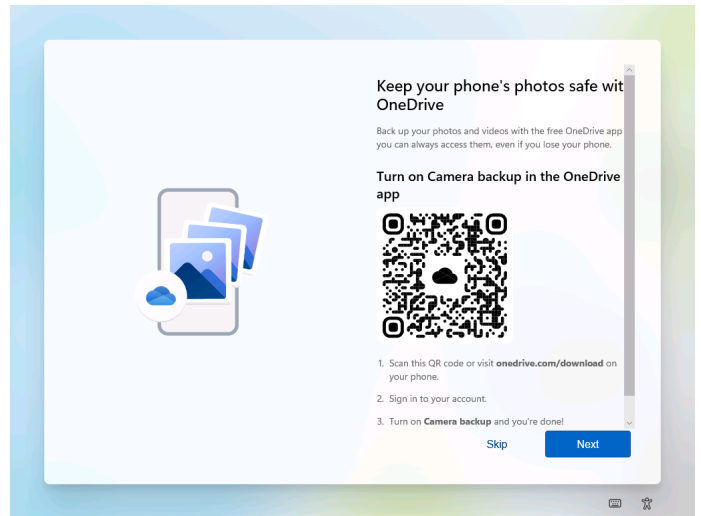
- 38. Choose an option.
- 39. Click on "Accept."

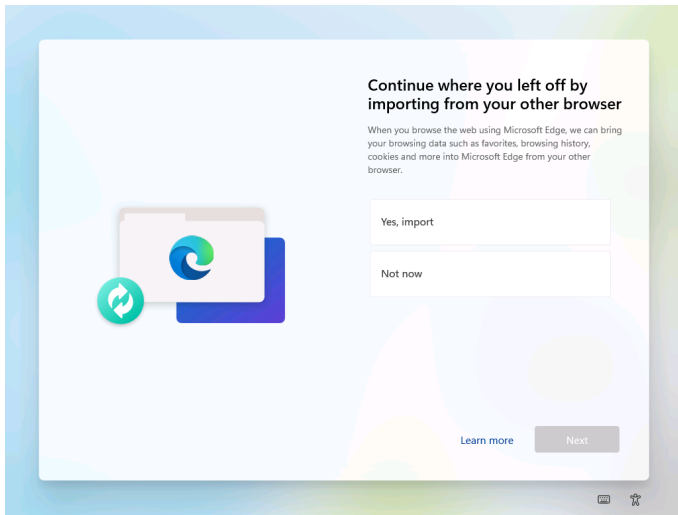


- 40. Choose the options you are interested in.
- 41. Click on "Accept" or on "Skip " if you want skip this step.

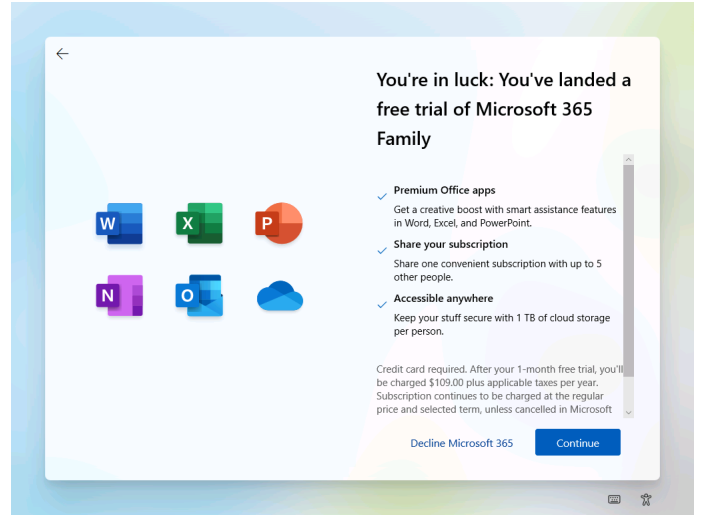


- 42. If you want to use your cellphone on your computer, you can scan the "QR code."
- 43. Click on "Accept" or on "Skip " if you want to ignore this step.

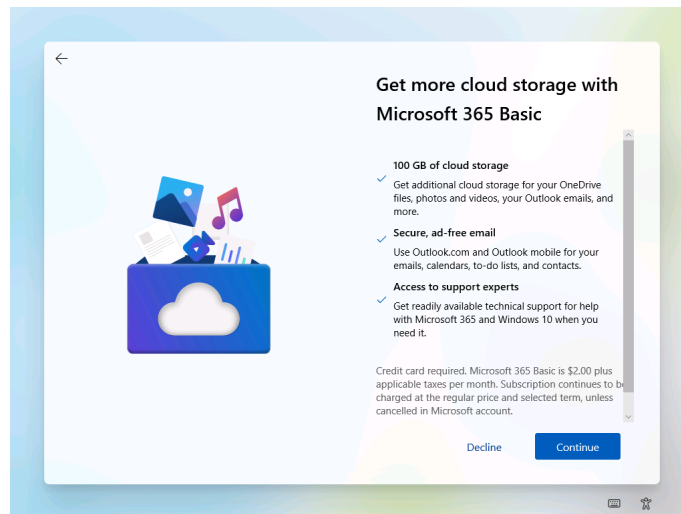




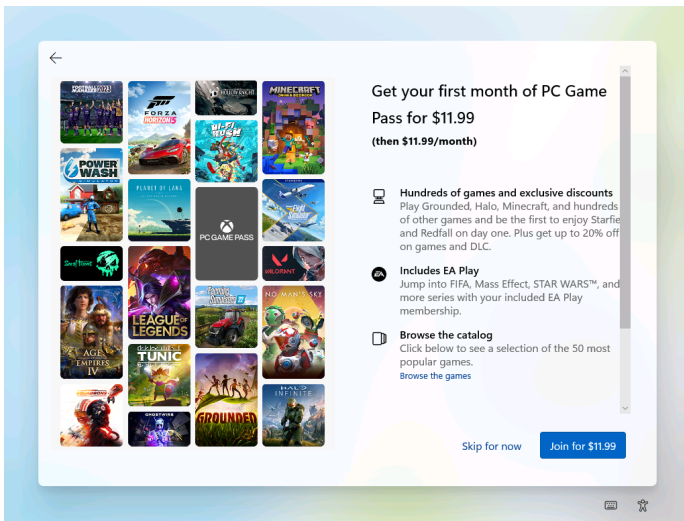
44. Click on "Continue, " if you want to take advantage of the offer, otherwise choose "Decline."



45. Click on "Join for 1.00\$, " if you want to take advantage of the offer, otherwise choose "Skip for now".



46. Click on "Continue, " if you want to take advantage of the offer, otherwise choose "Decline."



47. Click on "Join for 1.00\$, " if you want to take advantage of the offer, otherwise choose "Skip for now".



48. Wait a moment so that Windows can create your account according to the options you have previously chosen.

You are now ready to use your computer.

4- CONTACT



Need technical assistance

Operation, configuration or software use
Phone: 1 877 617-6737 then dial 3 then 3.



To make a donation

E-mail: don@opeq.qc.ca
Phone: 1-877 617-OPEQ (6737)

Please don't hesitate to contact us if you have any questions or comments, or if you'd like to find out more about our organization and projects.

@OPEQUEBEC

